

THOC7 Antibody (C-term)
Affinity Purified Rabbit Polyclonal Antibody (Pab)
Catalog # AP9905b**Specification**

THOC7 Antibody (C-term) - Product Information

Application	FC, WB,E
Primary Accession	Q6I9Y2
Other Accession	Q7TMY4 , Q3SZ60
Reactivity	Human, Mouse
Predicted	Bovine
Host	Rabbit
Clonality	Polyclonal
Isotype	Rabbit IgG
Antigen Region	138-166

THOC7 Antibody (C-term) - Additional Information**Gene ID** 80145**Other Names**

THO complex subunit 7 homolog, Functional spliceosome-associated protein 24, fSAP24, Ngg1-interacting factor 3-like protein 1-binding protein 1, NIF3L1-binding protein 1, hTREX30, THOC7, NIF3L1BP1

Target/Specificity

This THOC7 antibody is generated from rabbits immunized with a KLH conjugated synthetic peptide between 138-166 amino acids from the C-terminal region of human THOC7.

Dilution

FC~~1:10~50

WB~~1:1000

E~~Use at an assay dependent concentration.

Format

Purified polyclonal antibody supplied in PBS with 0.09% (W/V) sodium azide. This antibody is purified through a protein A column, followed by peptide affinity purification.

Storage

Maintain refrigerated at 2-8°C for up to 2 weeks. For long term storage store at -20°C in small aliquots to prevent freeze-thaw cycles.

Precautions

THOC7 Antibody (C-term) is for research use only and not for use in diagnostic or therapeutic procedures.

THOC7 Antibody (C-term) - Protein Information

Name THOC7**Synonyms** NIF3L1BP1

Function Component of the THO subcomplex of the TREX complex which is thought to couple mRNA transcription, processing and nuclear export, and which specifically associates with spliced mRNA and not with unspliced pre-mRNA (PubMed:[15833825](#), PubMed:[15998806](#), PubMed:[17190602](#)). Required for efficient export of polyadenylated RNA (PubMed:[23222130](#)). Plays a key structural role in the oligomerization of the THO-DDX39B complex (PubMed:[33191911](#)). TREX is recruited to spliced mRNAs by a transcription-independent mechanism, binds to mRNA upstream of the exon-junction complex (EJC) and is recruited in a splicing- and cap- dependent manner to a region near the 5' end of the mRNA where it functions in mRNA export to the cytoplasm via the TAP/NXF1 pathway (PubMed:[15833825](#), PubMed:[15998806](#), PubMed:[17190602](#)).

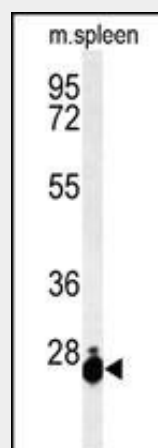
Cellular Location

Cytoplasm. Nucleus. Nucleus speckle. Note=Interaction with THOC5 is required for nuclear localization.

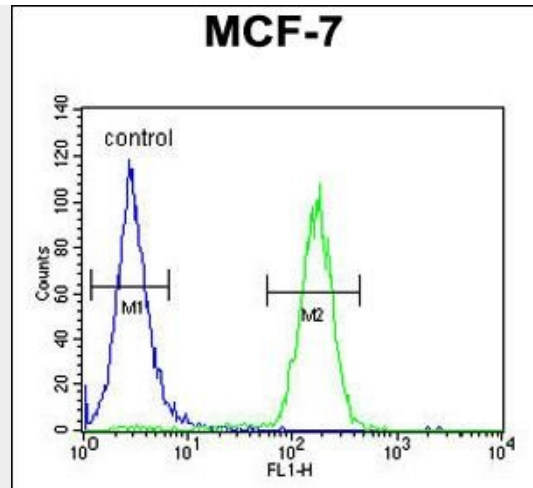
THOC7 Antibody (C-term) - Protocols

Provided below are standard protocols that you may find useful for product applications.

- [Western Blot](#)
- [Blocking Peptides](#)
- [Dot Blot](#)
- [Immunohistochemistry](#)
- [Immunofluorescence](#)
- [Immunoprecipitation](#)
- [Flow Cytometry](#)
- [Cell Culture](#)

THOC7 Antibody (C-term) - Images

Western blot analysis of THOC7 Antibody (C-term) (Cat. #AP9905b) in mouse spleen tissue lysates (35ug/lane). THOC7 (arrow) was detected using the purified Pab.



THOC7 Antibody (C-term) (Cat. #AP9905b) flow cytometric analysis of MCF-7 cells (right histogram) compared to a negative control cell (left histogram). FITC-conjugated goat-anti-rabbit secondary antibodies were used for the analysis.

THOC7 Antibody (C-term) - References

- El Bounkari, O., et al. FEBS Lett. 583(1):13-18(2009)
Boyne, J.R., et al. PLoS Pathog. 4 (10), E1000194 (2008)
Cheng, H., et al. Cell 127(7):1389-1400(2006)
Masuda, S., et al. Genes Dev. 19(13):1512-1517(2005)

THOC7 Antibody (C-term) - Citations

- [An ataxia-telangiectasia-mutated \(ATM\) kinase mediated response to DNA damage down-regulates the mRNA-binding potential of THOC5.](#)
- [Human corneal endothelial cells employ phosphorylation of p27\(Kip1\) at both Ser10 and Thr187 sites for FGF-2-mediated cell proliferation via PI 3-kinase.](#)